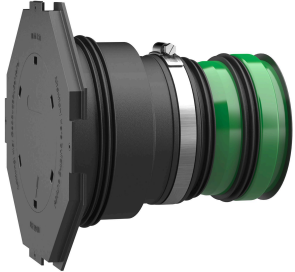


Universal wall bushing 150/KG2000



Flow-optimized wall feed-through - prevents deposits and backflow in the wastewater system. Enables sealing in double/element walls thanks to three 3-web seals

Applications, features, properties and benefits

Available ready-to-install to wall thickness, three 3-web seals for use in double/element walls, pressure-tight after concreting, for installation flush with formwork, blind-sealed ready-to-install, available in KG and KG2000 quality, no change in flow direction, with integrated preparation flange. gas-tight and watertight. DIN 18533 W1-E, DIN 18533 W2.1-E, waterproof concrete stress class 1, waterproof concrete stress class 2

Scope of delivery

1 piece rubber sleeve with integrated 3-web seal, 1 piece clamping band, 1 piece sleeve cover with preparation flange and blind cover for hammering in, 2 additional 3-web seals, 1 piece lamella plug, 1 piece KG (2000) pipe (pre-assembled ready for installation)

Application

all wall types

Assembly

After placement in the formwork, the UDME is set in concrete. Plastic-modified bitumen thick coatings can then be applied to the preparation flange

Article number	Title of variant	Length mm	Media pipe Øa mm	Weight kg/piece
78300238	UDME150/300 KG2000	300	160	3
78300241	UDME150/365 KG2000	365	160	3,650
78300243	UDME150/400 KG2000	400	160	4