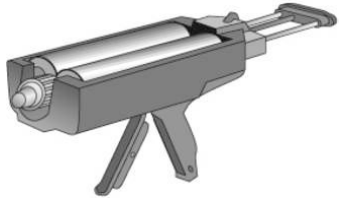


## 2-component adhesive cartridge



Epoxy resin adhesive. For making waterproof resilient joints with fibrous concrete plugs and fair-faced concrete plugs.

Twin cartridge contains components A and B  
Components blended by mixing nozzle  
Test report as recommended by German KTW

### Processing

Instructions for use:

The surfaces being joined must be free from dust and grease

Minimum working temperature 8°C

One kg of adhesive is sufficient for approx. 40 concrete plugs MKK®B 15

One kg of adhesive is sufficient for approx. 150 fibrous concrete plugs FB 22/50 mm