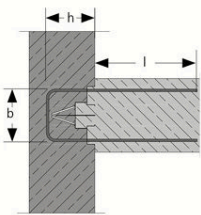
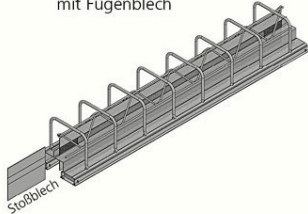
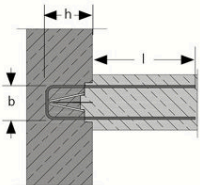
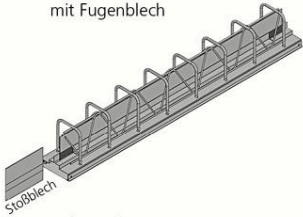


## COMAX® WU

COMAX® WU Typ B  
mit Fugenblech



COMAX® WU Typ S1  
mit Fugenblech



### Comax® WU - The self-sealing reinforcement connection

Especially for the use of reinforcement connections in WU components  
Reinforcement connection in combination with the proven shuttering  
elements from the COMAX® board system

A coated FB 120 metal waterstop is used as a sealant

Standard length 1.25 m; box height 30 mm

Comax® WU type B with metal water stop

$h = \text{min. } 18 \text{ cm}$ ,  $b = \text{min. } 14 \text{ cm max. } 53 \text{ cm}$

Comax® WU type S1 with metal water stop

$h = \text{min. } 18 \text{ cm}$ ,  $w = \text{min. } 11 \text{ cm max. } 22 \text{ cm}$

### Comment to article

Bitte bei der Bestellung diese Maße angeben:

- BST Ø mm
- Bügelabstände e in cm
- h cm
- b cm
- l cm

## COMAX® WU

Article number	Title of variant
412999999	Comax® WU Type B
30791634	AF 200 GK k=45 DF sheet welded with Comax incl. bumper plate, H = min. 18 cm
41148888	Comax® P 140 WU Type S1
41147777	AF Comax® P 140 FB B2
41168888	Comax® P 160 WU Type S1
41167777	AF Comax® P 160 FB B2
41198888	Comax® P 190 WU Type S1
41197777	AF Comax® P 190 FB B2
41228888	Comax® P 220 WU Type S1
41227777	AF Comax® P 220 FB B2
41248888	Comax® P 240 WU Type S1
41247777	AF Comax® P 240 FB B2