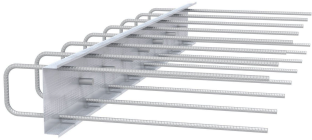


## COMAX® X - standard types, shear force parallel to the joint

Shear force applied parallel to lift joint  
Formulas and tables



### Applications, features, properties and benefits

Benefits:

Standard length 1.25 m

Toothing in transverse direction for optimal force transmission

COMAX® L for exposure to longitudinal shear forces parallel to the joint

Significant advantages for planners:

acc. to DIN 1045-1 the COMAX® L is classed as "TOOTHED"

Dimensionally stable cover facilitates short striking times

Special types (except K and BK) available on request

### Technical data

Agenda:

B = Typ/Blecbreite/Elementbreite

l = Verankerungslänge

b = Bügelbreite

h = Bügelhöhe

e = Bügelabstand

## COMAX® X - standard types, shear force parallel to the joint

Article number	BSt Ø mm	Bracket spacing e in cm	b1 cm	h cm	l cm	Packaging piece/pallet	Weight kg/piece
52110815	8	15	8	15	32	80 Stück/Palette = 96 m	
52241220	12	20	15	21	46	48 Stück/Palette	8,990
52110820	8	20	8	15	32	80 pieces/pallet	
54111015	10	15	8	15	39	80 pieces/pallet	
52111020	10	20	8	15	39	80 pieces/pallet	
52140815	8	15	11	15	32	80 pieces/pallet = 100m	
52140820	8	20	11	15	32	80 pieces/pallet	
52141010	10	10	11	15	39	108 Stück/Palette	
52141015	10	15	11	15	39	80 pieces/pallet	
52141020	10	20	11	15	39	80 pieces/pallet	
52141215	12	15	11	15	46	80 pieces/pallet	
52141220	12	20	11	15	46	80 pieces/pallet	
52160815	8	15	13	15	32	60 pieces/pallet = 75m	
52160820	8	20	13	15	32	60 pieces/pallet	
52161010	10	10	13	15	39	84 Stück/Palette	
52161015	10	15	13	15	39	60 pieces/pallet	
52161020	10	20	13	15	39	60 pieces/pallet	
52161215	12	15	13	15	46	60 pieces/pallet	
52161220	12	20	13	15	46	60 pieces/pallet	
52190815	8	15	16	15	32	60 pieces/pallet = 75m	
52190820	8	20	16	15	32	60 pieces/pallet	
52191010	10	10	16	15	39	72 Stück/Palette	
52191015	10	15	16	15	39	60 pieces/pallet	
52191020	10	20	16	15	39	60 pieces/pallet	
52191215	12	15	16	15	46	60 pieces/pallet	
52191220	12	20	16	15	46	60 pieces/pallet	
52220815	8	15	19	15	32	48 pieces/pallet = 60m	
52220820	8	20	19	15	32	48 pieces/pallet	
52221010	10	10	19	15	39	48 Stück/Palette	
52221015	10	15	19	15	39	48 pieces/pallet	
52221020	10	20	19	15	39	48 pieces/pallet	
52221215	12	15	19	15	46	48 pieces/pallet	
52221220	12	20	19	15	46	48 pieces/pallet	
52240815	8	15	21	15	32	40 pieces/pallet = 50m	
52240820	8	20	21	15	32	40 pieces/pallet	
52241010	10	10	21	15	39	48 Stück/Palette	
52241015	10	15	21	15	39	40 pieces/pallet	
52241210	12	10	21	15	32	40 pieces/pallet	

## COMAX<sup>®</sup> X - standard types, shear force parallel to the joint

Article number	BSt Ø mm	Bracket spacing e in cm	b1 cm	h cm	l cm	Packaging piece/pallet	Weight kg/piece
52241215	12	15	21	15	46	40 pieces/pallet	