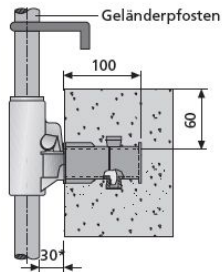
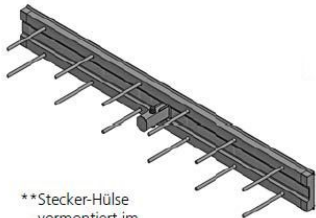


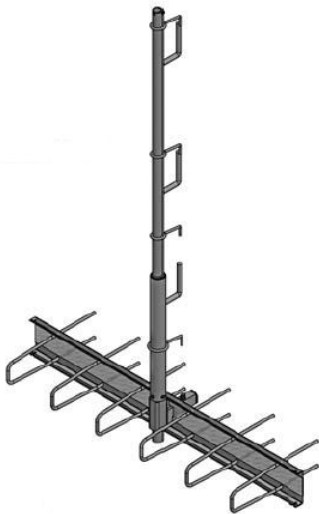
Plug



* Vergrößerung durch Verlängerungsstück auf Anfrage.



**Stecker-Hülse vormontiert im COMAX®



Railing post holder for holding the BETOMAX® railing post on the edges of ceilings and bridge superstructures made of concrete in conjunction with the plug socket that was concreted in beforehand.

Applications, features, properties and benefits

Properties, advantages:

Simple assembly of the plug sleeve on the inside of the edge formwork
Snapping the plug into the sleeve after stripping or before installing the fall protection

No hindrances to subsequent trades, e.g. B. Sealing work by lateral anchoring

The cover prevents the ingress of concrete during the concreting process

Comment to article

Rental of plugs and plug extensions on request.

Plug-socket pre-assembled in the COMAX® rebar connection on request.